



Let's Connect!



Website:

[www.childrenwithdisability.co.nz](http://www.childrenwithdisability.co.nz)

Email:

[childrenwithdisabilitynz@gmail.com](mailto:childrenwithdisabilitynz@gmail.com)

### PROJECT SEESAW



## HEROES BEHIND THE CHILDREN WITH DISABILITY NZ PROJECT

01

### Project Seesaw 2023

Children with Disability NZ has a mission to raise \$10,000 to gift a super cool wheelchair-friendly seesaw to Raumanga Park in Whangarei.

02

### Project Sponsors

Project sponsors are like fairy godmothers, but instead of a magic wand, they offer up the funds and resources needed to make project dreams come true. Without these awesome sponsors, projects could be left stranded on the sidelines. So, let's give a big round of applause to our sponsors for making our project goals a reality!

03

### Wheelchair Accessible

These products are a double whammy of awesome, designed to be inclusive for kids in wheelchairs while also being versatile enough for all kiddos to enjoy. .

[www.childrenwithdisability.co.nz](http://www.childrenwithdisability.co.nz)

ON A MISSION TO SPREAD ENDLESS FUN AND HAPPINESS



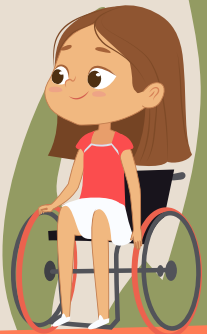
## CHILDREN WITH DISABILITY NZ PROJECT SPONSORS



## STEP INTO THE ENCHANTING REALM OF DISABILITY NZ'S CHILDREN

Let's shout it from the rooftops: inclusive playgrounds with accessible seesaws are the bee's knees! By providing a space where everyone can join in and play together, it builds a strong and welcoming community.

And it's not just about fun and games; it also opens up the conversation about inclusivity and accessibility for people with disabilities. Plus, let's not forget the feel-good factor of improving self-esteem and confidence for individuals with disabilities. By adding accessible seesaws, we can create a better world for all.



DONATE



04

### Social Interaction

Seesaws are the ultimate friendship-building machines, giving you the chance to team up with pals, share giggles, and sharpen your chit-chat abilities. Plus, it's a chance to bring everyone together, young or old, for some good-hearted fun that fosters compassion and open-mindedness.

05

### Therapeutic Benefits

Who says fun is just for the able-bodied? Wheelchair-friendly seesaws can also double as an excellent therapeutic tool for people with disabilities. The gentle swaying motion can help soothe and promote sensory integration therapy.

06

### Our Sponsors

To donate, simply visit ASB 12-3099-0121964-00. Children with Disability NZ. Let's team up with our sponsors and become the real-life superheroes for these awesome kids.



### REVOLUTIONARY WHEELCHAIR SEESAW: LANDING SOON AT RAUMANGA PARK, WHANGAREI

Picture this: a magical seesaw that welcomes folks of all abilities, including those with mobility struggles.

It's a game-changer, creating a play zone where everyone can hang out, laugh and make memories together.

That's not all, this epic ride also brings about physical and cognitive benefits to its players. So, if you're looking for a sweet spot where inclusivity reigns supreme, look no further than the wheelchair-accessible seesaw.

<https://www.childrenwithdisability.co.nz/wheelchair-accessible-seesaw/>

